

Tropical Storm Dolly

Date/Time: 0500EDT, 7/22/08
 Location: 23.2N, 93.8W, 295 miles SE of Brownsville, TX
 Windspeed/Pressure: 60mph, 997mb (Tropical Storm)
 Speed/Direction: 15mph W
 CHI Value/Trend: 0.0 strengthening
 Condition: Slowing and intensifying into landfall

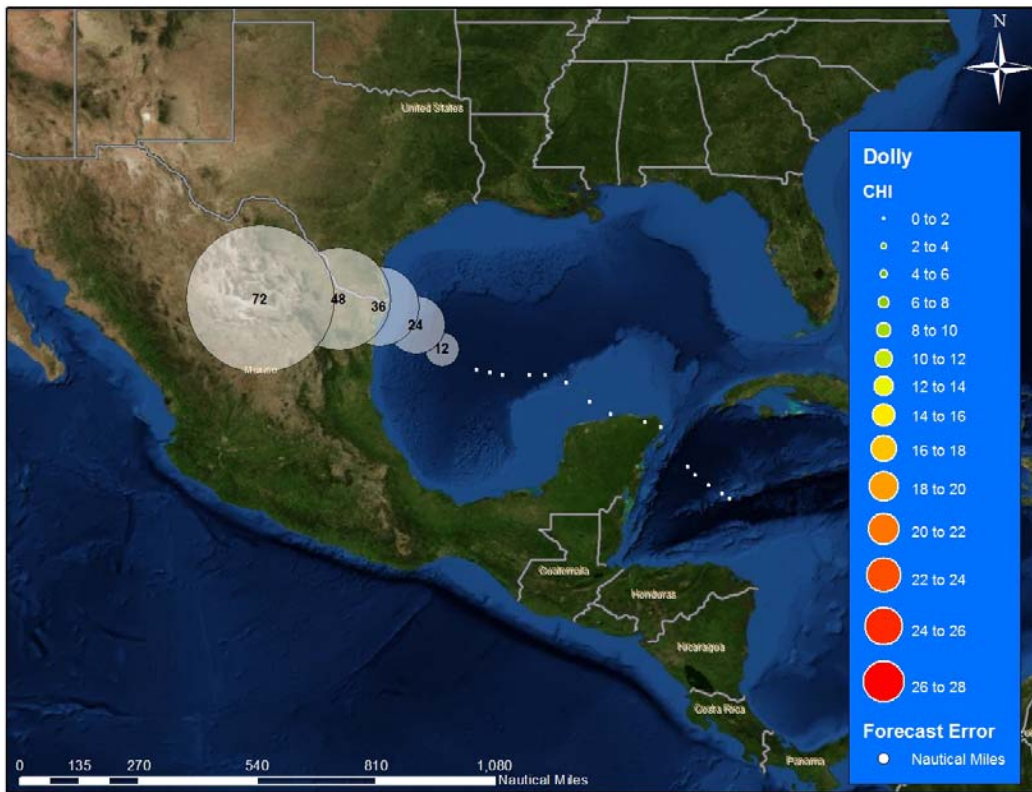


Figure 1: Tropical Storm Dolly (Adv. 8) track and forecast with 2007 forecast errors

Tropical Storm Dolly made a brief pass over the Yucatan Peninsula Monday morning and emerged into the western Gulf of Mexico largely unscathed by its passage over land. Since then, Dolly has been tracking just north of due west and has begun to organize itself better, with the storm beginning to form an eyewall. Dolly is sitting just below hurricane strength and the NHC has issued hurricane watches for sections of southern Texas and the northern Gulf coast of Mexico. Dolly is a fairly large storm and tropical storm force winds are expected to be experienced along much of the southern Texan and northern Mexican coastlines

The models are in fairly close agreement that Dolly will make landfall in the region of the US/Mexico border as the storm is prevented from moving much towards the north by high pressure over the central United States. The majority of the models show a landfall just on the Mexican side of the border but a landfall anywhere from La Pesca, MX, to Baffin Bay, TX, would not be unreasonable. The main disagreements between the models, such as they are, are centered on when Dolly will make landfall – the models are generally calling for Dolly to slow over the next 36 hours but the degree of this retardation in forward speed varies from model to model

Dolly is starting to become a more organized tropical system and it is likely that it will become a hurricane in the 36-48 hours before landfall. Now that Dolly has moved away from the Yucatan, the influence of dry air has lessened and the storm is beginning to develop a solid outflow pattern. It is unlikely, however, that Dolly has the time or the environment to become a major hurricane. While the temperature of the waters of Gulf of Mexico is well above the threshold for hurricane formation, Dolly's track will take it over a cooler part of the Gulf (figure 2). Further, Dolly will start to see increased levels of wind shear and will likely start to entrain some dry continental air as it nears the coast. Landfall as a Category 1 or 2 hurricane is the most likely outcome.

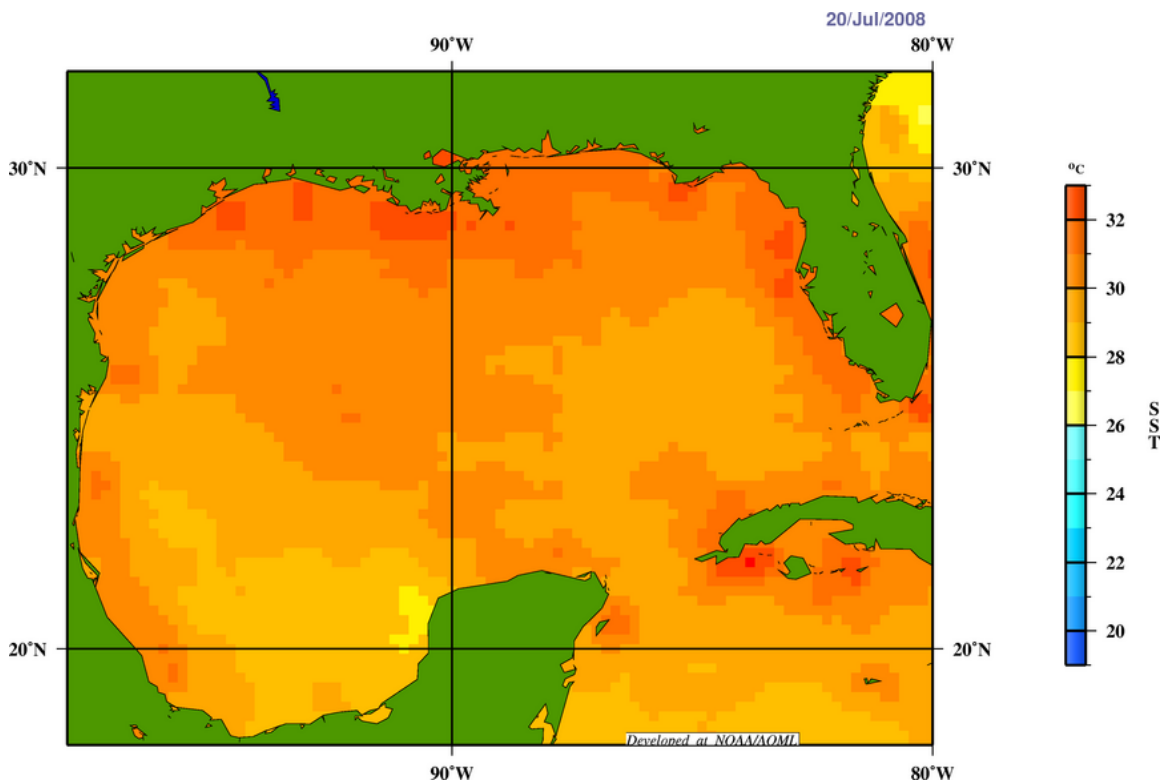


Figure 2: Gulf of Mexico sea surface temperatures (from NOAA/AOML)

The broad-scale impacts from Dolly will likely be tropical storm force winds along much of the coastline south of Galveston, high surf and upwards of 4 inches of rain in south

Texas and north Mexico. There are few concentrated pockets of exposure along this section of the coast, apart from Brownsville, TX and Corpus Christi, TX. Brownsville appears to be at the highest risk from hurricane force winds. We caution that, while landfall could well occur in Mexico, much of the Texan coastline could be impacted by damaging winds.

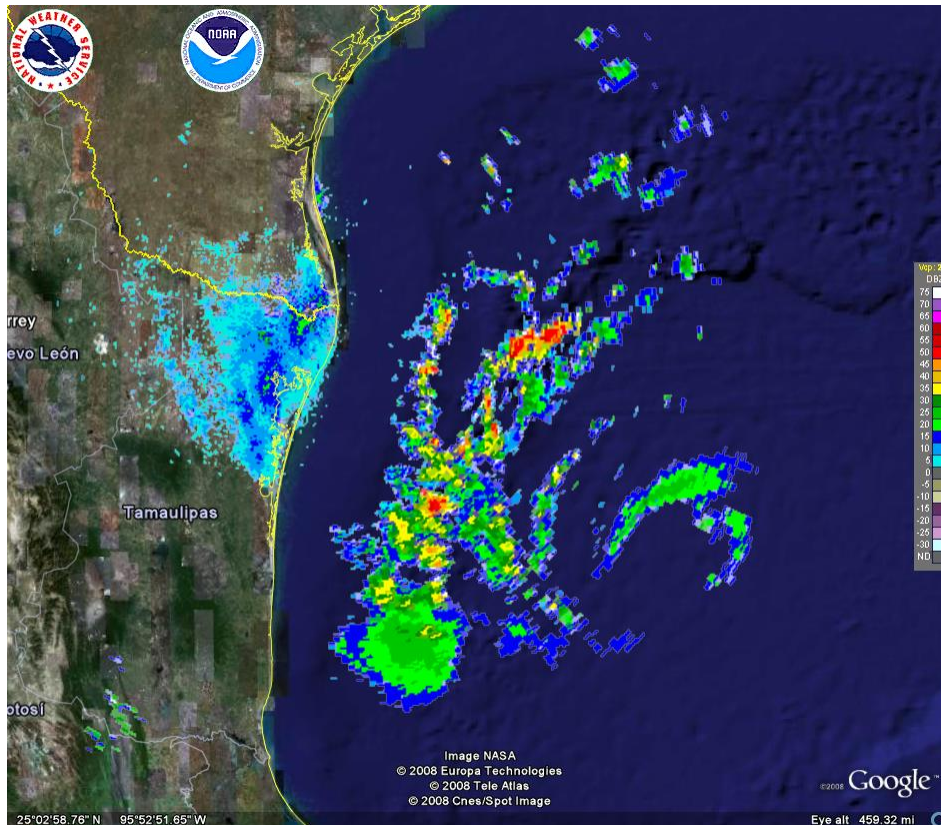


Figure 3: Radar image of TS Dolly's outer rain bands (data from NOAA/NWS)

Elsewhere in the tropics, TS Cristobal is rapidly approaching extinction in the waters of the North Atlantic and the tropical wave off the coast of Africa is still under watch.

Conclusions

Tropical Storm Dolly has passed over the Yucatan and is now in the western Gulf of Mexico, bearing down on the south Texas/north Mexico coast. Landfall is expected in the US/Mexico border region in the next 36-48 hours. It is likely that Dolly will become a hurricane in the next 36 hours, potentially making landfall as either a Cat 1 or Cat 2 hurricane.

About ReAdvisory and Carvill

ReAdvisory, a service of Carvill, provides value-added service products to clients through a range of modeling and risk assessment tools that optimize the reinsurance decision-making process.

Carvill is a leading independent reinsurance intermediary in Specialty business. Carvill's success since its foundation in 1977 has been achieved through an unwavering commitment to independence, integrity and service. Carvill's tailored specialty products cover the needs of the clients, including Medical Malpractice, Directors & Officers, Errors & Omissions liabilities, Major Property Catastrophe, and Retrocessional business.

For further information visit www.carvill.com

ReAdvisory is a Carvill service provided by Carvill America, Inc. and R.K. Carvill & Co. Ltd. R.K. Carvill & Co. Ltd is authorized and regulated by the Financial Services Authority.

Carvill

Clare White

Tel: +44 (0)20 7929 2800

ReAdvisory

Steve Smith

Tel: +1 312 236 1900

UK

QBO Bell Pottinger for Carvill

James Carron

Tel: +44 (0)20 7861 2424

USA

Stanton Crenshaw for Carvill

Kathleen Sheridan

Tel: +1 212 780 1900

Disclaimer

This information in this document is provided solely for informational purpose, is general in nature and is not tailored to the needs of any specific user. Such information, and our related calculations, projections, forecasts and estimates, are derived from or based on sources believed by us to be reliable, but we do not guarantee the correctness or accuracy of such information, calculations, projections, forecasts or estimates. We do not guarantee the correctness or accuracy of the Carvill Hurricane Index. All forward-looking statements in this document are subject to various risks and uncertainties that could cause results to differ materially from expectations. Users should not place rely on such forward-looking statements (or any other information contained herein), whether as a result of new information, research, future events or otherwise.

Our statements contained herein are solely statements of opinion and not statements of fact or recommendations. Our statements must be weighed, if at all, solely as one factor among many in a user's decision making process. Users should seek the advise, counsel and assistance of others in connection with their analysis and use of the information in this document. The information contained herein, the Carvill Hurricane Index values and any investments or other products or service based on thereon are provided on an "as is" basis. We make no representation, warranty or guarantee, express or implied, including any as to the accuracy, completeness, timeliness, merchantability or fitness for any particular purpose of any information contained herein, the Carvill Hurricane Index values and any investments or other products or service based on thereon.

We shall not be liable, under any circumstances, to any user or other person for any special, indirect, incidental, consequential, punitive or similar damages of any kind, or for lost profits or lost opportunities based on the use of this document, even if we have been advised of that possibility. To the extent permitted by law, we disclaim liability for any direct damages based on use of this document. Any provision of this disclaimer declared invalid or unenforceable shall be deemed severable and not affect the validity or enforceability of the remaining provisions.

This document or any portion of the information it contains may not be copied or reproduced in any form without the prior permission of ReAdvisory, except that clients of Carvill or its affiliates need not obtain such permission when using this report for their internal purposes.

CHI and CARVILL HURRICANE INDEX are trademarks of Carvill America, Inc. and may not be used without Carvill's prior written consent. The CHI is Carvill's copyrighted, proprietary index, and may not be used, published or reproduced without Carvill's prior written consent.